

# XOR

CORPORATION

**NFL CHALLENGE**

**PRO CHALLENGE**

**OLIGOPOLY**

**BERMUDA SQUARE**

**BASKETBALL CHALLENGE**

FIRST CLASS SOFTWARE



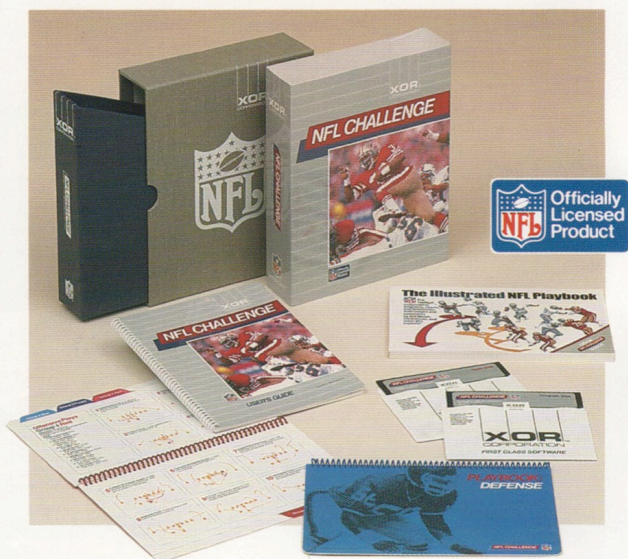
# NFL CHALLENGE

IBM PC and Apple Macintosh

You're on the march to the Super Bowl with your favorite NFL team. Your proper selection of plays and use of your personnel may put the cherished trophy on your mantle. You must read the other team's offense and defense, keep your players healthy, and avoid costly penalties.

NFL Challenge puts all these factors at your fingertips with:

- Complete player rosters for every NFL team
- Three playing options:  
Human vs. Human  
Human vs. Computer  
Computer vs. Computer
- Three levels of computer coaching:  
Conservative, Aggressive, and Balanced
- Players "weighted" according to individual characteristics. Criteria include:  
Ability to Run, Pass, Receive, Block, and Kick.  
Height  
Weight  
Speed for 40 yard dash  
Years of experience
- 49 offensive and 26 defensive plays

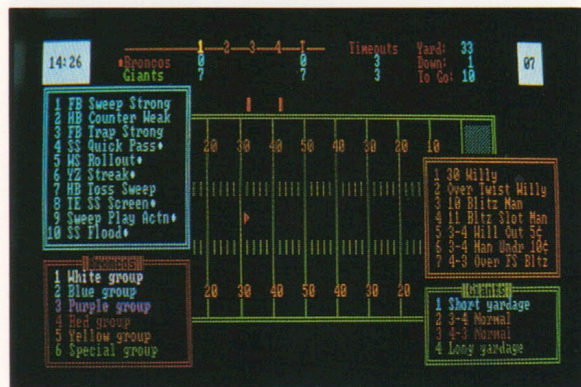


2

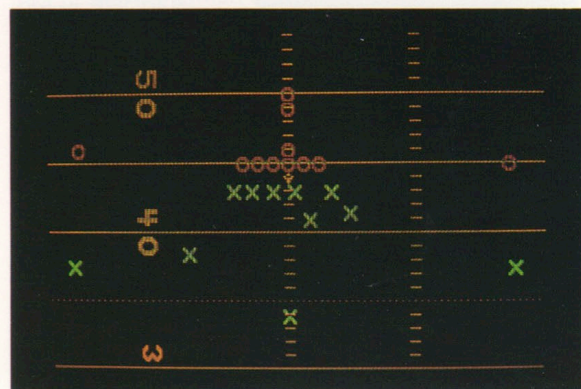
- True-to-Life Simulation:  
Play Results, Fumbles, Interceptions, Injuries, and Penalties occur according to NFL statistics.
- Ability to substitute players
- Animated play-action with slow-motion instant replay
- Complete documentation including offensive and defensive playbooks

Players 0 to 2

See Page 14 for system requirements.



Play selection screen



Animated play-action screen

3



## NFL CHALLENGE ACCESSORIES

### SEASON TEAM DISK

These yearly updates keep you current with all the teams of the NFL. It features new team rosters, updated player ratings and statistics, and printable team rosters. Team disks are available for every year beginning with the 1984 season. Specify IBM or Macintosh.



### GREATEST TEAMS DISK

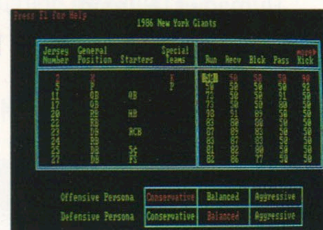
Discover which team is really the greatest with a collection of the greatest team from each NFL franchise. Teams included are such classics as the "Perfect" 1972 Miami Dolphins and the Super Bowl XXI Champion New York Giants. Revised annually. Specify IBM or Macintosh.

- |                          |                           |
|--------------------------|---------------------------|
| 1980 Atlanta Falcons     | 1972 Miami Dolphins       |
| 1980 Buffalo Bills       | 1969 Minnesota Vikings    |
| 1985 Chicago Bears       | 1985 New England Patriots |
| 1981 Cincinnati Bengals  | 1983 New Orleans Saints   |
| 1969 Cleveland Browns    | 1986 New York Giants      |
| 1977 Dallas Cowboys      | 1968 New York Jets        |
| 1977 Denver Broncos      | 1980 Philadelphia Eagles  |
| 1970 Detroit Lions       | 1978 Pittsburgh Steelers  |
| 1966 Green Bay Packers   | 1975 St. Louis Cardinals  |
| 1979 Houston Oilers      | 1980 San Diego Chargers   |
| 1970 Indianapolis Colts  | 1984 San Francisco 49ers  |
| 1969 Kansas City Chiefs  | 1984 Seattle Seahawks     |
| 1976 Los Angeles Raiders | 1979 Tampa Bay Buccaneers |
| 1975 Los Angeles Rams    | 1982 Washington Redskins  |

1-800-635-2425

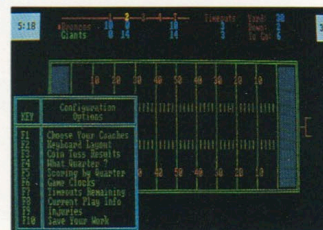
### ROSTER EDITOR DISK

With this exciting tool you can keep your team rosters current and reflect personnel changes through trades, retirements, cuts, injuries, and line-up changes. This editor keeps players, ratings, and team files within the guidelines established by NFL Challenge. Specify IBM or Macintosh.



### GAME SITUATION DEVELOPMENT SYSTEM

Designed for the ultimate challenge, you create your own game situations. "Fourth and Goal" on the three with your team down by three points and a minute and a half to play in the game. Or replay the situation created by the questionable penalty or the bad play. Ideal for the armchair quarterback, it sets up all the "what-if" scenarios. Specify IBM or Macintosh.



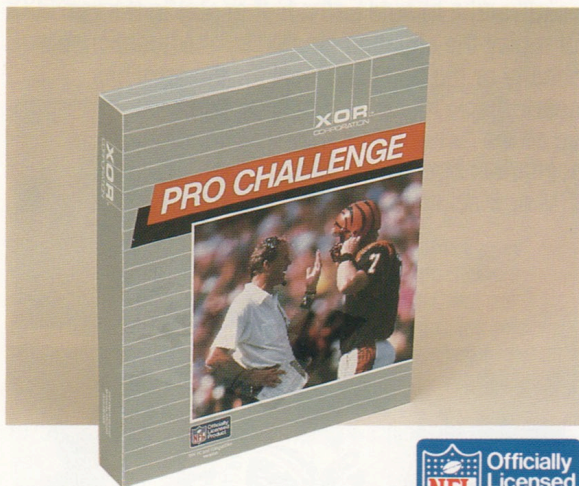


# PRO CHALLENGE

IBM PC and Apple Macintosh

You're the coach! Put your own coaching ability on the line as equal all-NFL teams compete for the victory. A reduced version of NFL Challenge, this game includes:

- Three playing options:
  - Human vs. Human
  - Human vs. Computer
  - Computer vs. Computer
- Three levels of computer coaching:
  - Conservative, Aggressive, and Balanced
- Players "weighted" according to individual characteristics. Criteria include:
  - Ability to Run, Pass, Receive, Block, and Kick
  - Height
  - Weight
  - Speed for 40 yard dash
  - Years of experience
- 27 offensive and 14 defensive plays

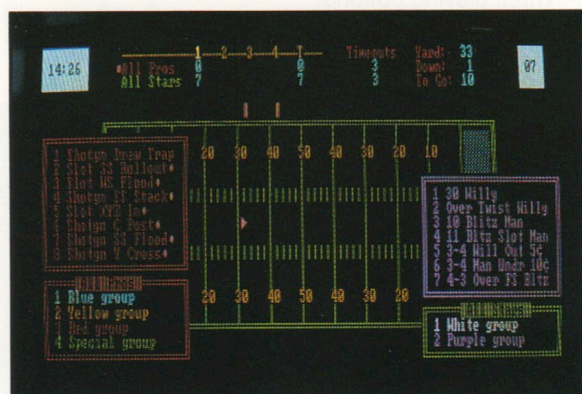


1-800-635-2425

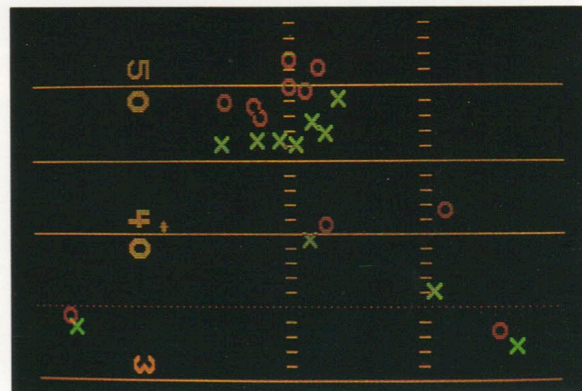
- True-to-Life Simulation
  - Play Results, Fumbles, Interceptions, and Penalties occur according to NFL statistics
- Animated play-action with slow-motion instant replay
- Complete documentation including two offensive/defensive playcards

Players: 0 to 2

See Page 14 for system requirements.



Play selection screen



Animated play-action screen



# BASKETBALL CHALLENGE

IBM PC and Apple Macintosh

Coach your favorite college basketball team to the national championship. In this five-on-five computer vs. computer simulation, you set the tempo of the game, send in plays, designate the desired shooter, and work the clock on your way to victory.

With the same exciting animation as NFL Challenge, you'll also find:

- Complete player rosters for selected college teams
- Five-on-Five Play
- Three playing options:
  - Human vs. Human
  - Human vs. Computer
  - Computer vs. Computer
- Players "weighted" according to individual characteristics. Criteria include:
  - Height
  - Weight
  - Position
  - Player Skill Ratings
- Choose from 5 offensive game tempos
- True-to-Life Simulation:
  - Specific offensive plays for each team
  - Designated shooter and location
  - Player fatigue
  - Time Outs, Jump Balls, Fouls, and 45-second Shot Clock

Selected defenses

Man-to-man

Selected matchups

2-2-1 Zone

1-2-1 Zone

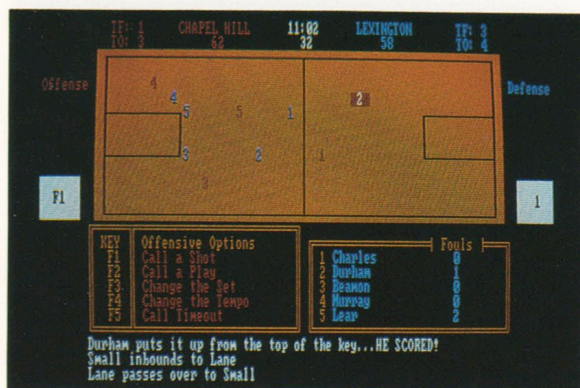
2-3 Zone

Press

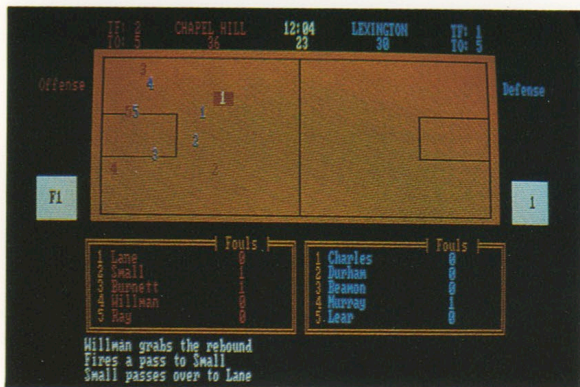
- Ability to substitute players
- Animated play-action
- Complete documentation

Players: 0 to 2

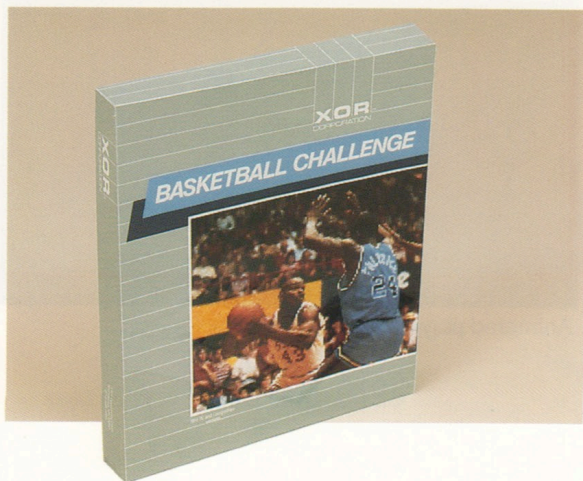
See Page 14 for system requirements.



Play selection screen



Animated Play-action screen





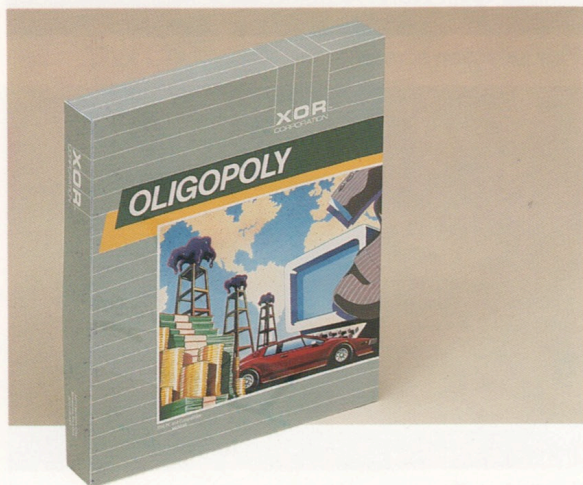
# OLIGOPOLY

IBM PC and Apple Macintosh

Become the richest person in the world! Demonstrate your business skills as you travel around the world buying and selling countries and building your business empire. As you put together monopolies in the petrochemical, manufacturing, electronics, and textile industries, your profits grow and your net worth increases dramatically. But be careful of your cash flow! You may need to raise a few million dollars to deal with kidnapers or pay off law suits.

Each turn you'll travel to one of 52 countries in the world. If it is unowned, you may buy it. But if it is owned, you must pay the owner for your visit. You also have the option of visiting your boardroom where you can conduct any other business for that turn. Here's where you'll have to decide whether to invest in the countries you own, sell countries to the bank to raise money, borrow from the bank, or repay an outstanding loan.

As you invest, the country you own begins expanding its operations by enlarging its factory. When another player lands on your country, the size of the deal, and the subsequent profits, are even greater.



But watch your cash flow! If you should get into a bind and not have enough cash on hand to pay current obligations, you must borrow or sell until you raise the necessary funds. The only other option is to go bankrupt and resign from the game.

Players: 2 to 6

See page 15 for system requirements.



1-800-635-2425



# BERMUDA SQUARE

IBM PC and Apple Macintosh

It's a test! And it's a contest! **You could win \$5,000** for the best solution.

Find the answer to the baffling question of how many squares of varying sizes will fit into one larger square when the total area for the two is the same.

Bermuda Square is based on the mathematical equation that says that the square of all numbers from 1 through 24 equals the square of 70.

$$1^2 + 2^2 + 3^2 + \dots + 23^2 + 24^2 = 70^2$$

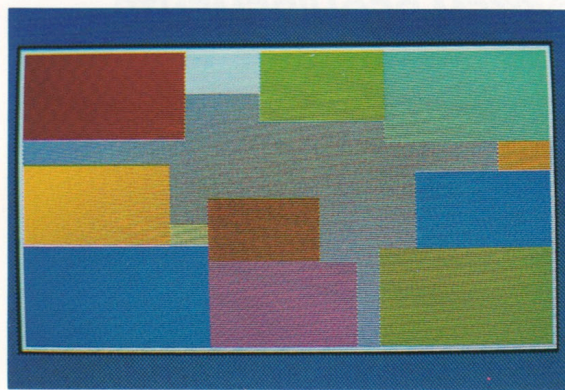
Bermuda Square challenges you! Can they all Fit? How many ways can you make them fit? Solve the puzzle and you could win \$5,000.

Players: 1

See Page 14 for system requirements.



1-800-635-2425



Due to screen resolution, all squares will appear as rectangles.

## CONTEST RULES

1. No purchase necessary. ONE ENTRY PER FAMILY.
2. To Enter: Fill out the Official Contest Entry Form and mail to XOR Corporation. Hand drawn or mechanically-reproduced Official Order Forms will be processed. **Note Bonus Rule below.**
3. Deadline: To be eligible, an entry must be received by March 1, 1989.
4. The Grand Prize Winner of \$2500 will be the person who finds the solution to the Bermuda Square puzzle by covering the most area of a 70 by 70 square with selected squares of 1 by 1, 2 by 2, ..., up to and including 24 by 24 without any overlap. In the case of a tie for the best solution, there will be a random drawing from among all winning entries.
5. **BONUS RULE:** If the Grand Prize Winner's entry is on the Official Contest Entry Form provided with the Bermuda Square product manufactured by XOR Corporation, the Grand Prize of \$2500 will be doubled and a Grand Prize of \$5000 will be awarded.
6. Odds of winning depend on the number of solutions submitted and the number of best solutions in the case of a tie.
7. No substitutions for the prize. Unclaimed prize will not be awarded.
8. The Grand Prize Winner will be notified by telephone and Purolator Courier and will be required to sign an affidavit of eligibility and release which must be returned within 14 days of notification. Winners who are minors will have the Grand Prize awarded in the name of a parent or legal guardian. Taxes, if any, are the sole responsibility of the winner. Sponsors are not responsible for late, lost, stolen, or misdirected communications. The XOR Bermuda Square Contest is open to residents of the United States except employees and their families of XOR Corporation, the NFL, NFL Properties, and participating manufacturers, advertising, promotion, and production agencies. Void wherever prohibited, taxed, or otherwise prohibited by law. All federal, state, and local taxes apply.
9. For the name of the Grand Prize Winner, send a stamped, self-addressed envelope by March 1, 1989, to: XOR Contest Winner, 5421 Opportunity Court, Minnetonka, MN 55343.



## SYSTEM REQUIREMENTS

### **NFL CHALLENGE, PRO CHALLENGE, AND BASKETBALL CHALLENGE**

Computers: IBM PC and Compatibles  
PC-DOS 2.1 or below—  
256K memory  
PC-DOS 3.0 or higher—  
320K memory  
MS-DOS—320K memory

IBM PC Jr.  
320K memory

Apple Macintosh  
512K memory

Monitors: Monochrome  
No graphics animation support except  
on Basketball Challenge.

Monochrome Graphics  
Paradise or equivalent graphics card  
(640 x 200 pixels) provides full  
animation support. No Hercules  
support at the present time.

Color Graphics  
Provides full support.

### **BERMUDA SQUARE**

Computers: IBM PC and Compatibles  
256K memory

IBM PC Jr.  
256K memory

Apple Macintosh  
512K memory

Monitors: Monochrome Graphics  
Paradise or equivalent graphics card  
(640 x 200 pixels) provides full support.  
No Hercules support at the present  
time.

Color Graphics  
Provides full support.

### **OLIGOPOLY**

Computers: IBM PC and Compatibles  
384K memory  
2 disk drives or a hard disk

Apple Macintosh  
512K memory  
2 disk drives or a hard disk

Monitors: Monochrome Graphics  
Paradise or equivalent graphics card  
(640 x 200 pixels) provides full  
animation support. No Hercules  
support at the present time.

Color Graphics  
Provides full support.

**Thank you  
for your interest  
in**

**XOR**<sup>™</sup>  
CORPORATION



**XOR**  
CORPORATION

5421 Opportunity Court  
Minnetonka, Minnesota 55343  
(612) 938-0005

1-800-635-2425