

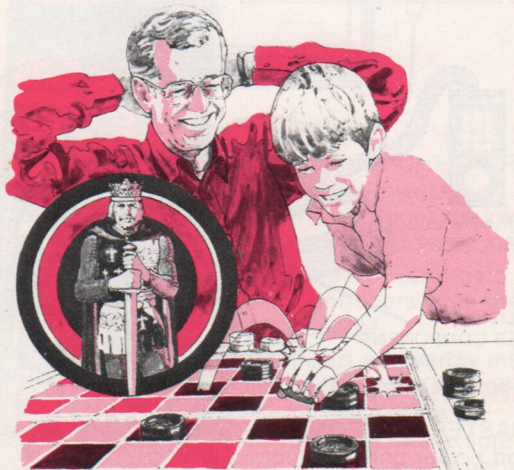
MATTEL ELECTRONICS®

INTELLIVISION™ Intelligent Television

CARTRIDGE INSTRUCTIONS

CHECKERS

(FOR COLOR TV VIEWING ONLY!)



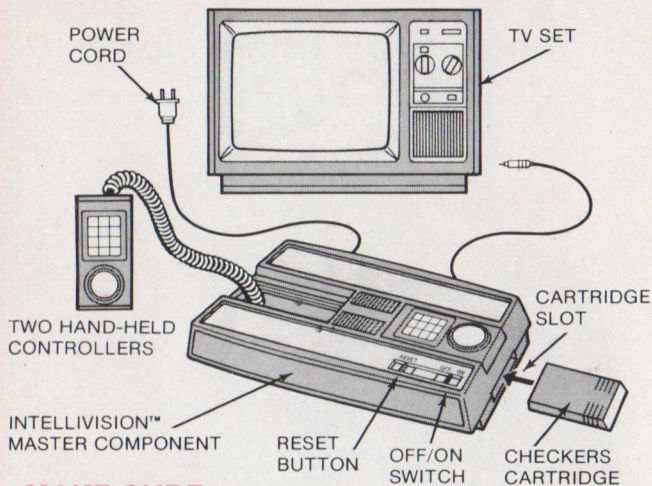
New tricks to the old game! Beat a friend, electronically. Or take on the canny computer in the time-honored contest of strategy, patience, and skill. Think you've played checkers? You've never played it like this! INTELLIVISION™ checkers is a game with all the moves!

HOW TO WIN! If you want to play **winning** INTELLIVISION™ checkers, read this booklet.

OBJECT OF THE GAME (for 1 or 2 Players):

To sweep the board of your opponent's men (checkers) by "jumping" them, or to trap them so that your opponent is unable to make a move.

CHECK YOUR EQUIPMENT:

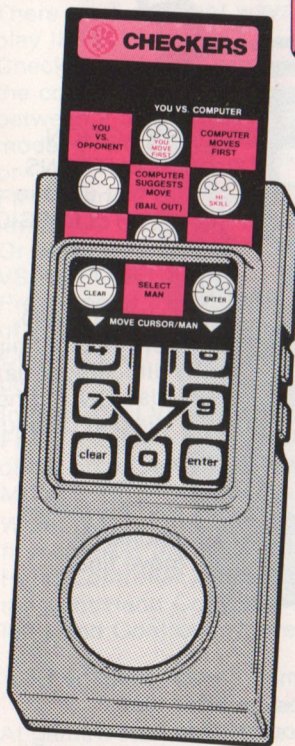
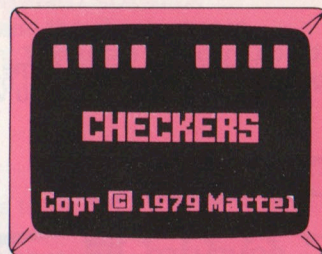


MAKE SURE:

- MASTER COMPONENT is connected to TV set and power cord is plugged in.
- TV set is plugged in and properly adjusted.
- CHECKERS Cartridge is placed in slot, firmly engaged.
- OFF/ON Switch is turned on.

PRESS RESET

BUTTON: Title will appear on TV screen:



ADD OVERLAYS

Find two CHECKERS keypad overlays in the cartridge package with this booklet.

Remove Hand-held Controllers from the console.

Insert an overlay into each Hand Controller (if two people are playing). Make sure the overlays fit tight and are all the way in. The overlays will be your visual guide.

CHECK YOUR CONTROLS

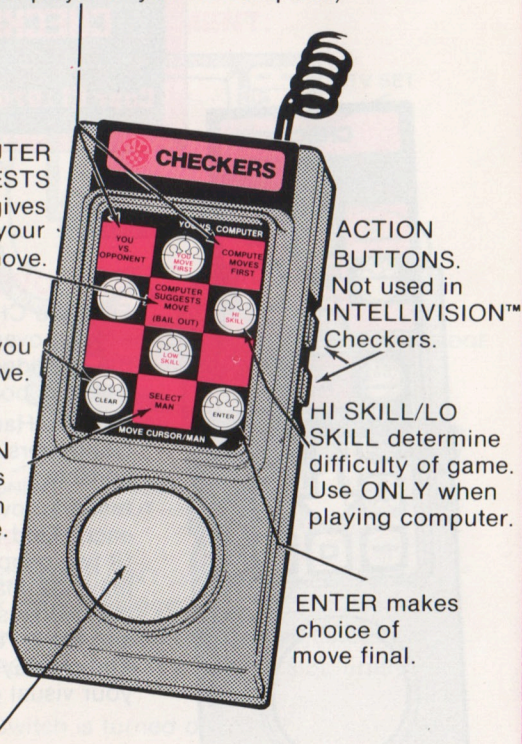
Buttons to select game mode (you vs. another player or you vs. computer)

COMPUTER SUGGESTS MOVE gives advice on your best next move.

CLEAR lets you change a move.

SELECT MAN registers choice of man to move.

DIRECTION DISC moves man/cursor. Imagine Disc divided into 4 quarters. Press quarter that corresponds to direction you want to move.



ACTION BUTTONS. Not used in INTELLIVISION™ Checkers.

HI SKILL/LO SKILL determine difficulty of game. Use ONLY when playing computer.

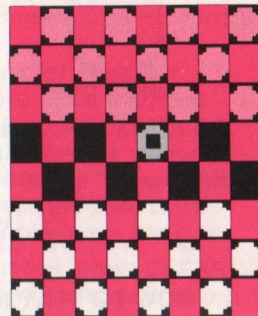
ENTER makes choice of move final.

BRING ON THE BOARD!

Press the Direction Disc and the checkerboard appears on the TV screen. This is the standard board you're familiar with. Board has 8 rows of 8 alternating red and black squares.

NAME YOUR GAME!

There are 5 different ways to play INTELLIVISION™ Checkers. Pit your wits against the computer and choose between 2 different game modes (YOU MOVE FIRST or COMPUTER MOVES FIRST) and 2 different skill levels (LO SKILL or HI SKILL). Or play another person (YOU VS. OPPONENT).



Press one of the 3 control buttons on the top row of your Hand Controller to select your game mode. Checkers will appear on the board in their starting positions.

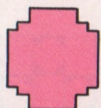
In both YOU VS. OPPONENT and YOU MOVE FIRST modes, white checkers appear at the top of the board, blue on the bottom. In COMPUTER MOVES FIRST mode, this order is reversed.

When playing the computer, whoever moves first controls the blue checkers. (Use either Hand Controller.) When playing another person, the right Hand Controller moves the blue checkers; left Hand Controller moves the white checkers.

INSPECT YOUR MEN!

At game's start, checkers are called SINGLE MEN. Single Men may move diagonally on the black squares IN A FORWARD DIRECTION ONLY.

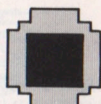
When a Single Man reaches his KING ROW (opposite his starting end of the board), he is CROWNED and becomes a KING. A King may move EITHER FORWARD OR BACKWARD on the black squares.



SINGLE MAN



KING



CURSOR

The CURSOR is a tan disc with a "window" in its center. It is used to move your men around the board.

YOU ARE NOW READY TO PLAY INTELLIVISION™ CHECKERS!!!

HOW TO PLAY INTELLIVISION™ CHECKERS (YOU VS. COMPUTER)

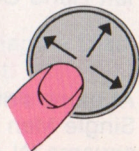
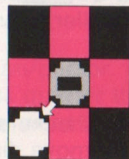
- 1 Select who moves first and skill level of game.



If computer moves first, it will make its move after you select skill level.

If you move first, computer will instruct you to SELECT MAN TO MOVE. The instruction will print out on your TV screen.

- 2 Use the DIRECTION DISC to move the CURSOR into position over the man you wish to move. Press SELECT MAN button. A LOW TONE will sound.

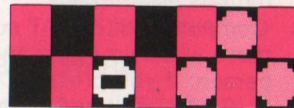


- 3 Computer will instruct you to SELECT MOVE. Use the Direction Disc to move man to an open, adjacent black square.
- 4 Press ENTER button to complete your move. You will hear a series of VARYING-PITCHED BEEPS as computer "thinks over" its next move. When the computer moves, 2 LOW TONES will sound.
- 5 TO JUMP, follow instructions for a regular move. Although you will move more than one square, press the Direction Disc only ONCE for each jump. Computer will advance your man to the correct square and move the "jumped" man to the side of the board. (Press the Disc twice to double-jump, 3 times to triple-jump, etc.)



CLEAR BUTTON

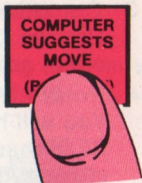
- 6 To change a move, press CLEAR button. Man and cursor will return to their original position and you may then select a different square or man. AFTER ENTER BUTTON IS PRESSED, YOU MAY NOT CHANGE YOUR MOVE.
- 7 If you attempt an illegal move (moving more than one square, not taking a jump, etc.), a BUZZER will sound and computer will not complete your move.
- 8 When a Single Man reaches his King Row and is crowned, a DASH appears in the center of the checker to mark it as a King. Crowning completes a move, even if the new King is now in position to jump an opponent's man.



KING



9 You may pick the computer's brain for advice on your next move by pressing **COMPUTER SUGGESTS MOVE**. Cursor will automatically move to the suggested man and a small white arrow will indicate the suggested move.



If you wish to take this move, follow instructions for a regular move. **YOU DO NOT HAVE TO FOLLOW COMPUTER'S SUGGESTION.**

10 **END OF GAME.** If you win, computer plays a **VICTORY TUNE**. If you lose, computer gives a **BRONX CHEER** and prints "YOU LOSE" on the screen.

(YOU VS. OPPONENT)

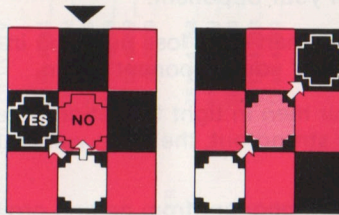
FOLLOW INSTRUCTIONS FOR YOU VS. COMPUTER, EXCEPT:

- 1 Flip a coin to decide who controls the blue checkers (right Hand Controller). This person moves first.
- 2 Computer will print out instructions on the TV screen for BOTH you and your opponent to **SELECT MAN TO MOVE** and **SELECT MOVE**. These will appear for you in the color of your men, for your opponent in the color of his/her men.
- 3 A **LOW TONE** will sound for you and your opponent after **SELECT MAN** and **ENTER** buttons are pressed.
- 4 Computer **WILL NOT** suggest move when you play another person. If you press **COMPUTER SUGGESTS MOVE** button in this mode, computer will print out "I CAN'T HELP YOU."
- 5 **END OF GAME.** Computer plays a **VICTORY TUNE** for the winner and prints out "YOU LOSE" in the loser's color.



SOME BASIC CHECKERS RULES

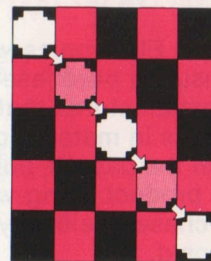
- Your moves must be **DIAGONAL**, one space at a time.



- You **MUST** jump your opponent's man when he occupies a black square adjacent to and in front of your man, and when there is an empty square beyond him into which you can jump.

- **YOU CANNOT JUMP YOUR OWN MAN.**

- If more than one jump move is possible, you may **CHOOSE** which jump to take. If you can jump more than one of your opponent's men in a row, you **MUST** take a double-jump.



DOUBLE JUMP

- A **KING MAY JUMP EITHER FORWARD OR BACKWARD.**
- **TIED GAME (DRAW).** The game will end in a draw if neither player can capture the other's men or prevent the other from making a move.
- **ILLEGAL MOVES** won't work. **BUZZER** will sound. No time limit on moves and you can change your mind on a move.



HOW TO WIN

- Think before you move! Try to stay one "jump" ahead of your opponent.
- Sacrifice a man if his loss puts you in a position to jump 2 of your opponent's men.
- Keep your men in tight formation. The more they are strung out, the more vulnerable they are.
- Keep your opponent from getting crowned. The first player to be crowned has a decided advantage.
- Use kings wisely. Remember: Kings can move both forward AND BACKWARD.

—90 DAY LIMITED WARRANTY—

Mattel Electronics warrants to the original consumer purchaser of any cartridge or cassette it manufactures that the product will be free of defects in material or workmanship for 90 days from the date-of-purchase. If defective, return the product along with proof of the date-of-purchase to either your local dealer or, postage prepaid, to:

Mattel Electronics Repair Center
5000 West 147th Street
Hawthorne, California 90250

for repair or replacement. This warranty gives you specific legal rights, and you may also have other rights which vary from state to state. This warranty does not cover damage resulting from accident, misuse or abuse.



HOW TO ORDER YOUR REPLACEMENT OVERLAYS

NOTE: SEPARATE CARTRIDGES ARE NEEDED FOR THE PROGRAMS LISTED BELOW.

Complete the order form below and mail it with your check or money order for \$1.25 per set of 2 overlays. California residents add 6% sales tax. Address check or money order to Mattel Electronics, Box 2350, Hollywood, CA 90025. Allow 4-6 weeks for delivery. Offer subject to availability.

Mark quantity ordered

BOWLING _____ sets
 SOCCER _____ sets
 LAS VEGAS ROULETTE _____ sets
 ELECTRIC CO. MATH FUN _____ sets
 ELECTRIC CO. WORD FUN _____ sets
 FOOTBALL _____ sets
 HORSE RACING _____ sets
 CHECKERS _____ sets
 AUTO RACING _____ sets
 SEA BATTLE _____ sets

SKIING _____ sets
 TENNIS _____ sets
 GOLF _____ sets
 BASKETBALL _____ sets
 HOCKEY _____ sets
 BACKGAMMON _____ sets
 LAS VEGAS POKER & BLACKJACK _____ sets
 ARMOR BATTLE _____ sets
 BASEBALL _____ sets
 SPACE BATTLE _____ sets
 BOXING _____ sets

1817-4289 _____ sets
 1814-4289 _____ sets
 1816-4289 _____ sets
 2615-4289 _____ sets
 1114-4289 _____ sets
 1119-4289 _____ sets
 2611-4289 _____ sets
 1121-4289 _____ sets
 2614-4289 _____ sets
 2612-4289 _____ sets
 1819-4289 _____ sets

Amount enclosed _____ Total sets ordered _____

Your name _____

Address _____

City _____ State _____ Zip Code _____

MATTEL ELECTRONICS®
IntelliVision™
Intelligent Television



Other electronic games
available from Mattel Electronics.
Look for them!