



USER'S GUIDE


READ *me* FIRST

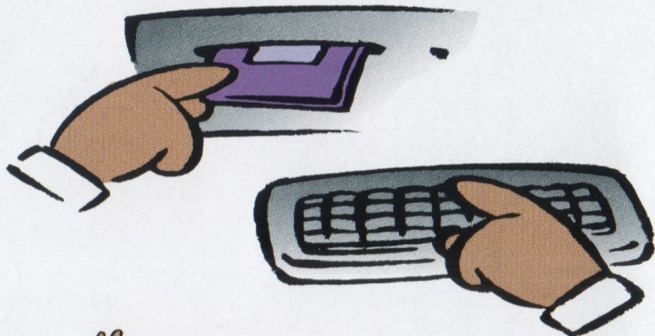





READ ME FIRST!

You have purchased a product from The B&N Companies that is **READY TO GO!** These are the simple steps to follow to successfully install and run your new software program.

 **Step 1:** Type **A:** then hit **ENTER**
then type **GO** then hit **ENTER**



 **Step 2:** Follow the on-screen prompts.

Some B&N products can be run directly from the diskette, others must be installed on your hard drive. Installation instructions are included on the following pages. If you encounter any problems with our products, please call our customer support hotline at (404) 816-0090 Monday through Friday between the hours of 8:30am-7:30pm E.S.T.

FREE
SOFTWARE OFFER
ON PAGE 14



MS-DOS INSTALLATION STEPS

Installation for the following programs:

Ancients II	Adventures of Robbo
Electroman	Jazz Jackrabbit
Jill Of the Jungle	Ken's Labyrinth
Jill Goes Underground	Line Wars II
Jill Saves the Prince	One Must Fall
Kiloblaster 1	Overkill
Kiloblaster 2	Solar Winds: Galaxy
Kiloblaster 3	Solar Winds: The Escape
Pinball: Crash & Burn	Space Chase 2: Fortress of Doom
Pinball: Cyborgirl	Space Chase 3: Showdown In Orbit
Pinball: Deep Sea	Traffic Department 2192
Pinball: Enigma	Xargon 1: Beyond Reality
Pinball: Jungle	Xargon 2: Secret Chamber
Pinball: Pot of Gold	Xargon 3: Xargon's Fury
Zone 66: Missions 1 & 2	Highway Hunter
Zone 66: Missions 3 & 4	

* SEE NEXT PAGE FOR
INSTALLATION OF ALL
OTHER MS-DOS TITLES



MS-DOS

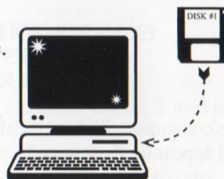
Initial Installation

STEP 1: Place program disk in the A: or B: drive.

STEP 2: Type **A:** or **B:** and hit **ENTER**.

STEP 3: Type **GO** and hit **ENTER**.

EXAMPLE: C>A: (ENTER)
A>GO (ENTER)



The computer will then ask if you want to install the program. Type **Y** for yes.

At the beginning of installation, the computer will ask for the "Drive to install to" and the "Directory to install to." The computer has listed the correct answers for both, so simply hit **ENTER** after both lines to install it automatically.

EXAMPLE: DRIVE TO INSTALL TO: C: hit **ENTER**
DIRECTORY TO INSTALL TO: \NAME OF
PROGRAM hit **ENTER**

The computer will then install the program. When installation is completed, the screen will say "(NAME OF PROGRAM) is now installed" and give instructions on running the program. It will ask if you want to read the instructions for the program. Type **Y** for YES and **N** for NO. PLEASE NOTE: **N** will return you to the DOS prompt.

Some programs will display a Program Setup in order for you to select graphics modes and sound devices. Follow the instructions on the screen.

After Initial Installation

STEP 1: Prompt the C drive - type **C:** and hit **ENTER**.

STEP 2: Run the C drive directory - type **DIR** and hit **ENTER**.

STEP 3: Choose the program you want from the directory -
type **CD (NAME OF PROGRAM)** and hit **ENTER**.

STEP 4: Type the name of the program and hit **ENTER**.

GENERAL EXAMPLE FOR THE PROGRAM "JAZZ":

C:\>CD JAZZ (ENTER)
C:\JAZZ> JAZZ (ENTER)



CUSTOMER
SUPPORT
(404) 816-0090

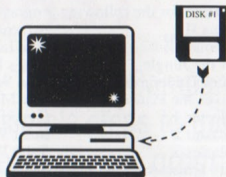


MS-DOS INSTALLATION STEPS

Initial Installation

- STEP 1: Place program disk in the A: or B: drive.
STEP 2: Type **A:** or **B:** and hit **ENTER**.
STEP 3: Type **GO** and hit **ENTER**.

EXAMPLE: **C>A: (ENTER)**
A>GO (ENTER)

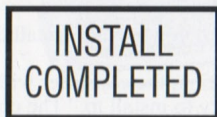


If the program requires a hard drive to run:

At the beginning of installation, the computer will ask for the "Source Drive" and the "Destination Path." The computer has listed the correct answers for both, so simply hit **ENTER** after both lines to install it automatically.

EXAMPLE: **SOURCE DRIVE (A:) hit ENTER**
DESTINATION PATH (C:\NAME OF PROGRAM)
hit ENTER

The computer will then install the program. When installation is completed, a box will appear on the screen*:



Hit **ENTER** to read the Startup procedure. After reading the Startup procedure, follow the instructions at the bottom of the screen:

P to Print this screen, or **ESC** to exit.

NOTE: **ESC** will return you to the DOS prompt.

* In some cases, information on graphics and/or sound will appear. After reading, press any key to exit. Then the "INSTALL COMPLETED" box will appear.

After Initial Installation

- STEP 1: Prompt the C drive - type **C:** and hit **ENTER**.
STEP 2: Run the C drive directory - type **DIR** and hit **ENTER**.
STEP 3: Choose the program you want from the directory -
type **CD (NAME OF PROGRAM)** and hit **ENTER**.
STEP 4: Type the name of the program and hit **ENTER**.

GENERAL EXAMPLE FOR THE PROGRAM "SEAWORD":
C:\>CD SEAWORD (ENTER)
C:\SEAWORD> SEAWORD (ENTER)



WHAT WOULD YOU DO? INSTALLATION FOR MS-DOS

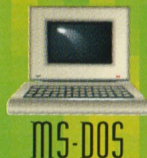
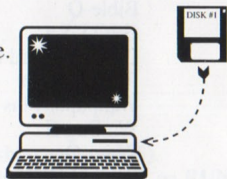
Initial Installation

STEP 1: Place program disk in the A: or B: drive.

STEP 2: Type **A:** or **B:** and hit **ENTER**.

STEP 3: Type **GO** and hit **ENTER**.

EXAMPLE: **C> A: (ENTER)**
A> GO (ENTER)



At the beginning of installation, the computer will prompt you to enter a path. It has listed the correct path for you, so simply hit **ENTER**.

EXAMPLE: **C:\WWYUODO (ENTER)**

The program will then install on to the hard drive.

The installation process will then ask for DISK 2. Insert DISK 2 and hit **ENTER**.

After initial installation of files, the computer will prompt you for the following:

1. NAME: **enter your name** (The directory will then appear)
2. PRINTER PORT: **enter your port**
3. TYPE OF PRINTER: **enter your printer**
4. SELECT YOUR PRINTER TYPE

IS THIS INFORMATION CORRECT? Type **Y** or **N**.

(At this point the computer gives you the option to print the README.TXT file.)

The computer will then prompt you for changes to AUTOEXEC.BAT and CONFIG.SYS. Type **Y** for Yes. This will not interfere with your other programs.

The computer will then reboot.

After Initial Installation

STEP 1: Prompt the **C** drive - type **C:** and hit **ENTER**.

STEP 2: Type **CD (Name of Program)** and hit **ENTER**.

STEP 3: Type the **name of the program** and hit **ENTER**.

EXAMPLE: **C:\CD\WWYUODO (ENTER)**
C:\WWYUODO>WWYD (ENTER)



**CUSTOMER
SUPPORT
(404) 816-0090**



WINDOWS INSTALLATION STEPS (A:\SETUP)

Initial Installation for the following programs:

- Bible-Q
- GEO USA
- Grand Unified Converter
- PC Bartender
- Wallpaper Plus
- WinBag II
- Write-On
- Student Organizer
- EE Bond



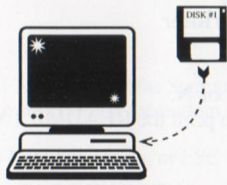
STEP 1: Place program disk in the A: or B: drive.

STEP 2: From Windows, in the Program Manager, select File and click on **RUN**.

STEP 3: In the RUN window, type **A:\SETUP**, then click on **OK** (or hit **ENTER**).

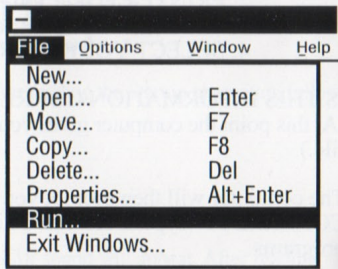
The program will then install on to the hard drive.

To start the program, double click on the program's icon. After the initial click on the program icon, it will appear in the Program Manager.



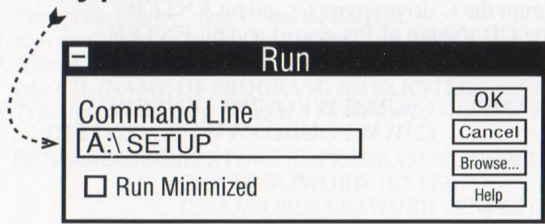
STEP 1

Click



STEP 2

Type



STEP 3



WINDOWS INSTALLATION STEPS (A:\ INSTALL)

Initial Installation for the following programs:

NST Calculator
Your Photos
Daily Notes
Quatra Command
F18:No Fly Zone

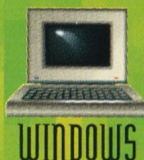
STEP 1: Place program disk in the A: or B: drive (As shown on page 5).

STEP 2: From Windows, in the Program Manager, select File and click on **RUN** (As shown on page 5).

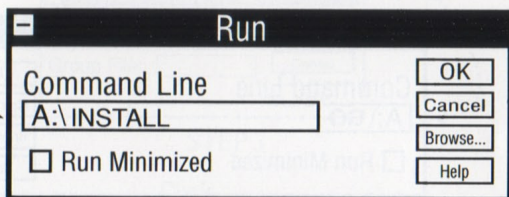
STEP 3: In the RUN window, type **A:\ INSTALL**, then click on **OK** (or hit **ENTER**).

The program will then install on to the hard drive.

To start the program, double click on the program's icon. After the initial click on the program icon, it will appear in the Program Manager (except for Your Photos, Quatra Command, F18:No Fly Zone, please see "AFTER WINDOWS INSTALLATION: CREATING AN ICON FOR THE PROGRAM" on page 8).



Type



STEP 3

WINDOWS INSTALLATION STEPS (A:\ GO)

Initial installation for the following programs:

Dare to Dream 2	Brainiacs Baffle & Hex
Dare to Dream 3	Brainiacs Checkers & Connect
Castle of the Winds 1	Brainiacs Hoppers & Reversi
Castle of the Winds 2	Art Factory Cartoons
World Time	Art Factory Holidays
Confound	Art Factory Borders & Accents
Diet Disk	Type Factory Volume #1
Chalkboard Math	Type Factory Volume #2
Car Maintenance	EZ Auto Troubleshooter



**CUSTOMER
SUPPORT**
(404) 816-0090

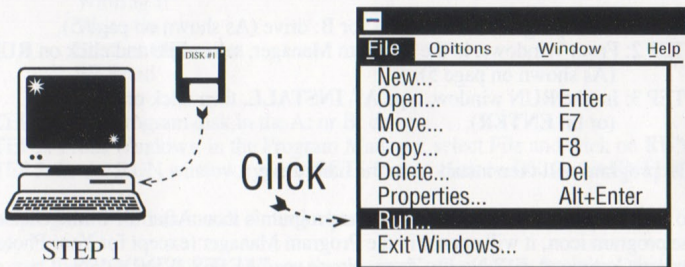
WINDOWS INSTALLATION STEPS (A:\GO) CONTINUED

Initial Installation

STEP 1: Place program disk in the A: or B: drive.

STEP 2: From Windows, in the Program Manager, select File and click on **RUN**.

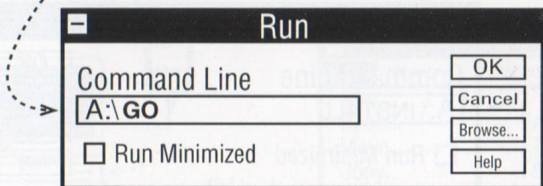
STEP 3: In the RUN window, type **A:\GO**, then click on **OK** (or hit **ENTER**).



STEP 1

STEP 2

Type



STEP 3

The computer will then ask if you want to install the program. Type **Y** for Yes. At the beginning of installation, the computer will ask for the "Drive to install to" and the "Directory to install to." The computer has listed the correct answers for both, so simply hit **ENTER** after both lines to install it automatically.

EXAMPLE: DRIVE TO INSTALL TO: C: (**ENTER**)
DIRECTORY TO INSTALL TO: \NAME OF
PROGRAM (**ENTER**)

AFTER WINDOWS INSTALLATION: CREATING AN ICON FOR THE PROGRAM

Now use the following steps to create an icon for the program

STEP 1: In the Program Manager, select File and click on **NEW**.

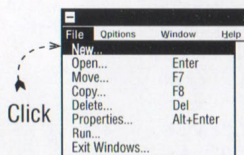
STEP 2: In the **NEW** window, select Group Item and click on **OK**.

STEP 3: The computer will ask you for a description. Type the name of the program and click on **OK**. The new group will appear in the center of the screen.

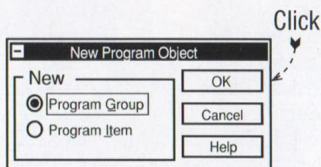
STEP 4: Go to File and click on **NEW** again.

STEP 5: Select Program Item and click on **OK**.

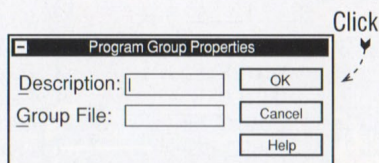
STEP 6: The computer will ask you for the following:



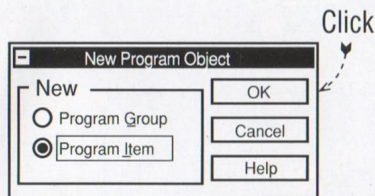
STEP 1



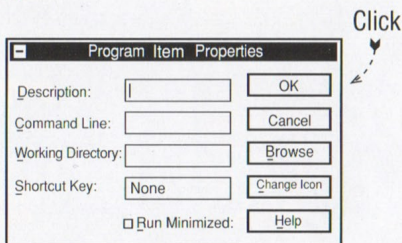
STEP 2



STEP 3



STEP 4 & 5



STEP 6



WINDOWS



**CUSTOMER
SUPPORT**
(404) 816-0090



AFTER WINDOWS INSTALLATION: CREATING AN ICON FOR THE PROGRAM CONTINUED

Type in the information needed *(see below to find the information for your program) and click on **OK**.

The icon will appear in your new group. Double click on the icon to begin the program.

*command lines and working directories for Windows programs:

Description	Command Line	Working Directory
Confound	Confound.EXE	C:\Confound
Diet Disk	Diet.EXE	C:\Dietwin
Chalkboard Math	Cbmath.EXE	C:\Cbmath
Car Maintenance	Car.EXE	C:\Carmain
EZ Auto Troubleshooter	EZautow.EXE	C:\EZauto
World Time	Wtime21.EXE	C:\Worldtim
Your Photos	Photo5.EXE	C:\Photos
Quatra Command	Quatra.EXE	C:\Quatra
F18:No Fly Zone	F18NFZ.EXE	C:\F18NFZ
Art Factory Cartoons	_____	C:\WMF
Art Factory Holidays	_____	C:\WMF
Art Factory Borders & Accents	_____	C:\WMF
Dare to Dream 2	D2D2.EXE	C:\Dare
Dare to Dream 3	D2D3.EXE	C:\Dare
Castle of the Winds 1	Castle1.EXE	C:\Castle1
Castle of the Winds 2	Castle2.EXE	C:\Castle2





PC Geography

You can master the world!

C015
PC VERSION



Student Organizer

You can keep important notes for years to come.

C022
WINDOWS



Bible-Q

A game with 1200 multiple-choice questions covering the Old and New Testaments.

C003
WINDOWS



Xargon 3

Xargon's Fury Now it's time for the final battle.

B055
PC VERSION



Zone 66

Missions 3&4 Battle treacherous terrorists. World peace is in your hands.

B071
PC VERSION



Egyptian Solitaire

The card game of the ages with the kings and queens of ancient Egypt!

B012
PC VERSION



Enigma

Ultimate PC Pinball

The most unusual and challenging pinball game ever!

B079
PC VERSION



Pot of Gold

Ultimate PC Pinball Challenge the rainbow in this fantasy pinball game.

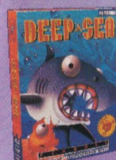
B081
PC VERSION



Dare to Dream 3

You must solve one conflict and puzzle after another.

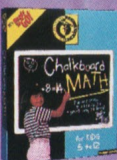
B065
WINDOWS



Deep Sea

Ultimate PC Pinball Dive into this challenging Pinball game.

B078
PC VERSION



Chalkboard Math

Color animation that makes learning fun. Ages 5-12

C017
WINDOWS



Heartlight

Every elf must perform a special task before he can marry. A thrilling game of action and adventure.

B062
PC VERSION



Emily's Kitchen Keeper

Keep your family recipes under wraps.

A023
WINDOWS



Jungle

Ultimate PC Pinball Jill of Jungle pinball game.

With a realistic soundtrack
B080
PC VERSION



GEO USA

Your kids will be able to find their way anywhere with this outstanding program.

C013
WINDOWS



Jazz Jackrabbit

It's one non-stop adventure with Jazz.

B083
PC VERSION



Our Family Tree

Dig into the past and learn all about your heritage.

A022
PC VERSION



Adventures of Robbo

Now it's time to help Robbo find the way to freedom.

B063
PC VERSION



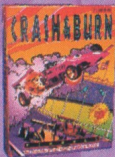
**CUSTOMER
SUPPORT**

(404) 816-0090

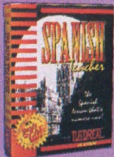




Brainiacs
3-D Checkers & Connect
A whole new dimension to the traditional games of Checkers and Connect.
B091
WINDOWS



Crash & Burn
Ultimate PC Pinball
You hurdle towards loads of channels, ramps, and switches.
B077
PC VERSION



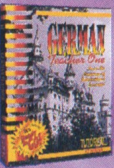
Spanish Teacher One
Contains hundreds of spanish word conjunctive forms.
B033
PC VERSION



French Teacher One
Learn to speak the language of love.
B030
PC VERSION



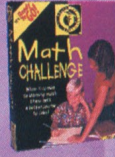
Diet Disk
Put in the diskette and take off the weight.
C004
WINDOWS



German Teacher One
With this program, you will be ready for Berlin in no time.
B031
PC VERSION



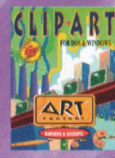
Cyborgirl
Ultimate PC Pinball
She's beautiful... she's tough...and she's ready to take you for a ride.
B082
PC VERSION



Math Challenge
Get a head start in math.
Ages 5-12
C019
PC VERSION



Electro Man
After many costly operations, he has superhuman powers.
B061
PC VERSION



Art Factory
Borders & Accents
100 professional quality color clip art images.
B095
WINDOWS



Jill of the Jungle
Help Jill fend off the horrendous jungle creatures.
B050
PC VERSION



What Would You Do?
At Home:
Locked Out & Fire
Next Door
An adventure in home safety.
C101
PC VERSION



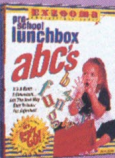
What Would You Do?
First Aid:
Head Injury & Cut Finger
An adventure in home safety.
C107
PC VERSION



Billy the Kid
Captured at last.
An action adventure game with a no-gun option!
B001
PC VERSION



Overkill
Journey across six planets gathering fuel, special weapons, and shields while dodging opponents.
B066
PC VERSION



Lunchbox ABC's
Games to help children learn their letters.
C010
PC VERSION



Ken's Labyrinth
Search for Sparky
Can you survive the journey to rescue poor Sparky?
B060
PC VERSION



EZ Auto Troubleshooter
The net result of many years of experience of top mechanics.
C005
WINDOWS



What Would You Do?

First Aid: Bee Sting & Burned Arm. An adventure in home safety. C105 PC VERSION



F 18-No Fly Zone

You find yourself in the middle of one of the largest air/ground assaults. A008 WINDOWS



PC Bartender

No matter who drink your guests request, with PC Bartender, you'll be prepared to serve it. C006 WINDOWS



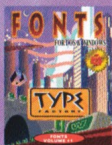
Art Factory Cartoons

100 professional quality color clip art images. B093 WINDOWS



PC Cookbook

Choose from 250 delicious recipes or add your own. C008 PC VERSION



Type Factory

Volume #1 100 professional quality TrueType fonts. B096 WINDOWS



Car Maintenance

Check out this check-up organizer for autos! A015 WINDOWS



Mice Men

A maze of strategic fun for the whole family. A007 PC VERSION



Brainiacs 3-D Hoppers & Reversi

Exciting graphics and sound update these classic strategy games. B098 WINDOWS



Brainiacs 3-D Baffle & Hex

Classic strategy games that will captivate your whole family. B092 WINDOWS



Typing Games

Typing Games will improve your skills and entertain you at the same time. A013 PC VERSION



Write On!

Even a beginner will find this word processor easy to use. D020 WINDOWS



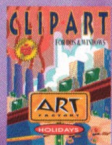
What Would You Do? At Home: Obscene Phone Call & Stranger at the Door

An adventure in home safety. C102 PC VERSION



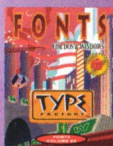
Quatra Command

Can you defeat the enemy fleet... all by yourself? A009 WINDOWS



Art Factory Holidays

100 professional quality color clip art images. B094 WINDOWS



Type Factory

Volume #2 100 professional quality TrueType fonts. B097 WINDOWS



Cajun Video Poker

Play the poker game from down in the bayou! B010 PC VERSION



Bank It!

An easy to use, menu driven program that comes complete with a variety of financial tools. D022 PC VERSION





FREE
SOFTWARE OFFER

All B&N Companies' software products are non copy-protected. Please make a single back-up copy and store the original in a safe place. Except as permitted under copyright law, no part of this program may be reproduced or distributed in any way, shape or form without the prior written permission of the author. This program is licensed for individual use on a single computer.

The B&N Companies, Inc. was created to bring you and your family quality software products covering a wide range of interests and needs at an unprecedented price.

B&N promises to bring you software that will captivate you, excite you and inform you. Software that will help you organize your life, your work or your home. We'll bring you the best in computer games.

Finally, we will give you value that will truly amaze you. We've brought together several families of products, each with a specific focus, to help you identify and select the software you need.



Yes

Please register my purchase and send my free software title to:

Name: _____

Address _____

City _____ State _____ Zip _____

Phone(_____) _____

Date Purchased: _____

Type of Computer: _____

Age(s) of Principal Users: _____

Please check if registering only.

With The Return of Your Warranty Card, You May Receive One
FREE Software Title, Paying Just \$3.50 Shipping and Handling.

Please send me: _____

Product Number: _____
Product Name

I have enclosed \$3.50 for shipping and handling.

Do not send cash. Please send check or money order only.

This is a Warranty Registration Incentive. There is no time limitation on this offer. Only one piece of software per registration. Please allow 6-8 weeks for delivery. Additional state tax of 6% required for Georgia residents only.

The B&N Companies makes no warranties or representations, either expressed or implied, as to the software and documentation, including, without limitation, the condition of the software and any implied warranties regarding merchantability or fitness for a particular purpose. The B&N Companies shall not be held liable for any lost profits or any direct, indirect, incidental, consequential or other damages suffered by licensee resulting from the use of this program or arising out of any breach of warranty.

Signature: _____

Date: _____

Please mail this form, (photocopies or mechanical reproductions will not be accepted) along with your check or money order, to:

The B&N Companies, Inc.
3060 Peachtree Rd. NW Suite 1250
Atlanta, GA. 30305



**CUSTOMER
SUPPORT
(404) 816-0090**



Cut along dotted line
& send in this card.



COMPANIES

FORM=RMF16.1