

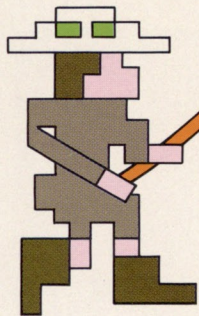


IBM PC*

JUNGLE HUNT*

FROM
ATARISOFT™

* Trademark and © of Taito America Corporation 1982.



STARTING THE HUNT

Insert the JUNGLE HUNT diskette into the disk drive and boot your IBM-PC as explained in your computer owner's guide. Plug a joystick into the controller jack. To go immediately to game play, press F1.

If you wish to set options, press the F2 key to bring up the Option Screen. Press F5 to select the difficulty level. Each level can be played by one or two players. Press F3 to select a two-player game, and press F3 again to return to a one-player game. Press F7 to select between keyboard and joystick control, and F9 or F10 to center the screen. Press S to switch the sound effects on or off, and press X to calibrate your joystick. To change the keys used for game control, press C. Once you have chosen the options you desire, press F1 to initiate play.

TO THE RESCUE!

JOYSTICK CONTROLS

During the game, use your joystick to guide Sir Dashly through the jungle's perils. Move Sir Dashly up, down, left, or right. Pull back to duck under boulders and push forward to jump higher.

JOYSTICK BUTTON

Joystick Button — Jump* or thrust knife.

KEYBOARD CONTROLS

Arrow keys* ... Up/down/left/right
Space bar* ... Jump*/thrust knife
P Pause
F1 Start game over
F2 Return to option screen

* These keys can be changed by selecting Option C from the Option Screen.

THE PRIMITIVE JUNGLE

You and your travel companion were enjoying a leisurely jungle safari when suddenly you were accosted by two savage cannibals. They spirited away your lady friend and plan to stew her up for dinner. You'd better rescue her quickly or your sweetie will be supper!

But you have an inkling where they've taken her. To reach her, you must swing through an impassable jungle on ropes, swim through a crocodile infested river, maneuver through a landslide of boulders, and finally fight off the horde of savages wielding poisoned spears. Your darling is suspended over a steaming cauldron of bubbling broth, and is steadily slipping into the drink.

ON WITH THE HUNT

When the hunt starts, your timer will count down from 5000. You must reach your lady love before it runs out.

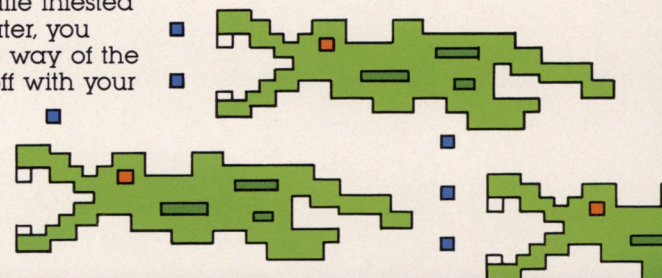
The forest will test your coordination and timing as you swing from the dangling ropes and jump from one to the next. Since some ropes swing faster than others, you'll have to time your leaps carefully. Watch out for other inhabitants of the trees.

From the last of the trees, you jump into the crocodile infested river. Once in the water, you must swim out of the way of the crocs or fend them off with your

knife. Press the "FIRE" button to stab them. Keep an eye on the air gauge though, because if you run out of air while under water, you'll lose a life. Just resurface to replenish your air supply. Be careful of the bubbles! If you are caught in them your travel to the surface will be delayed. When you reach the river bank, the boulder field lies ahead.

As the rocks tumble toward you, jump over them, run beneath, or duck under them to avoid being crushed. You can control your left or right movement with the joystick, and leap into the air by pressing the "FIRE" button.

Once you've passed the boulders, you're finally in reach of your companion, but she's being guarded by spear-wielding savages. You must dodge the dancing cannibals by running left or right and jumping over their spears. You finally leap up to your love for a tearful reunion. If she's too high when you leap, you drop into the brew.



SCORING



FOREST SCENE

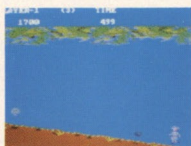
Jumping to a rope100



WATER SCENE

Stabbing a crocodile
(mouth closed)100
(mouth partially open) .200

Stabbing a rogue crocodile . .
300



ROCK SCENE

Running under a boulder .50

Ducking under a boulder 100

Jumping over a boulder .200



NATIVE SCENE

Jumping over a cannibal . . .
100

BONUSES


Bonus life At 10,000 points

Rescuing Lady 3 x Timer value

Each time you exit a section of the jungle 500 points

† IBM is a registered trademark of IBM Corp. This software is manufactured by ATARI, INC. for use on the IBM PC computer and is not made, sponsored, authorized or approved by International Business Machines Corp.



A Warner Communications Company 

© 1984 Atari, Inc. All rights reserved.
Printed in U.S.A.

1312 Crossman, Sunnyvale, CA 94086