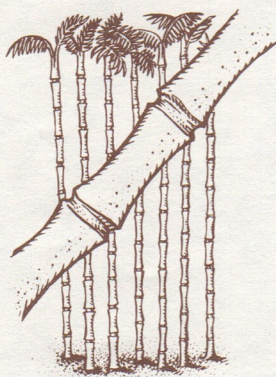


**Albatross** — a large sea bird whose wingspread can span 11-½ feet from tip to tip. The only time it lands is to breed.



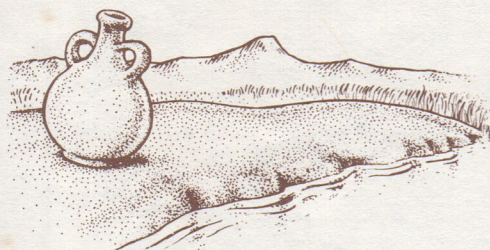
**Aloe** — a fleshy-leaved plant with spiny edges. The plants have red or yellow flowers.



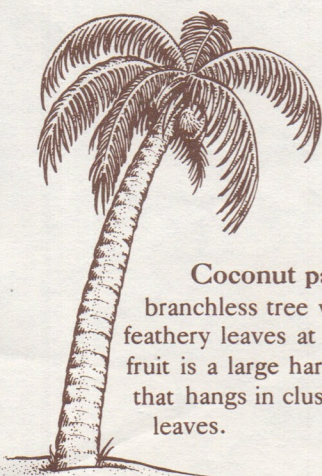
**Bamboo** — a tall, woody grass plant with bladelike leaves. It may grow as high as 120 feet with jointed stalks a foot thick.



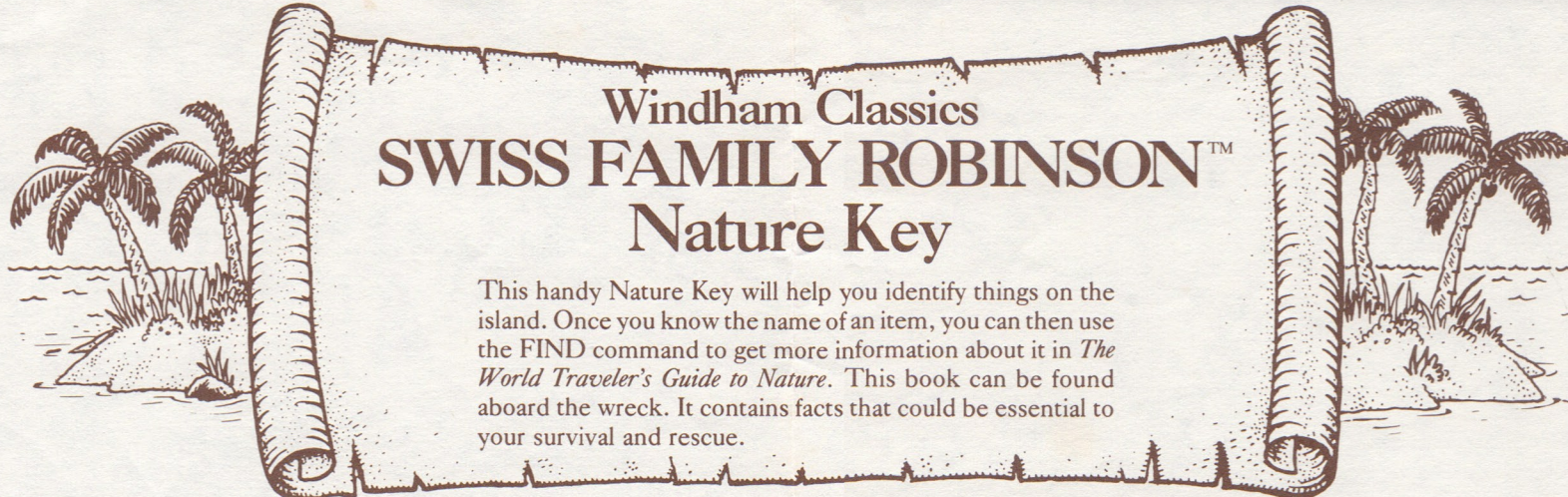
**Bear** — a large, thick-furred, short-tailed mammal that can grow to 10 feet long and 1,700 pounds. When the bear steals honey, its shaggy fur protects it from the angry bees.



**Clay** — a fine-grained kind of earth that turns into slippery mud when wet.



**Coconut palm** — a tall, branchless tree with a tuft of feathery leaves at the top. The fruit is a large hard-shelled nut that hangs in clusters amid the leaves.

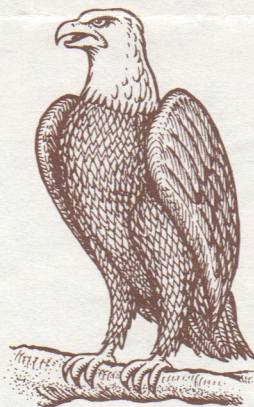


# Windham Classics SWISS FAMILY ROBINSON™ Nature Key

This handy Nature Key will help you identify things on the island. Once you know the name of an item, you can then use the FIND command to get more information about it in *The World Traveler's Guide to Nature*. This book can be found aboard the wreck. It contains facts that could be essential to your survival and rescue.



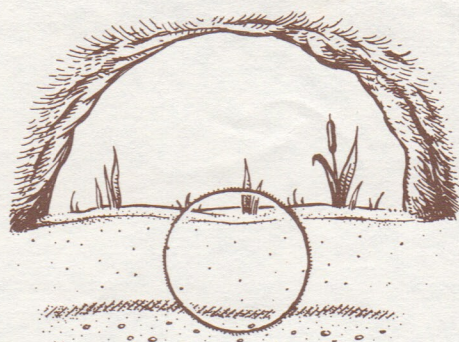
**Cotton plant** — a low shrub that produces round seed pods containing white, fluffy fibers. When the pods are ripe, they pop open revealing the cotton inside.



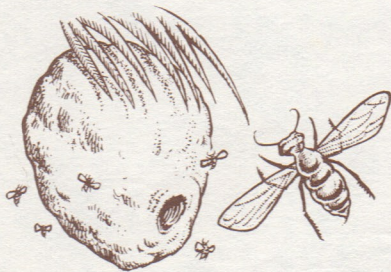
**Eagle** — a large, powerful bird of prey with a long, hooked bill, sharp talons, and broad wings. The feathers are usually brown, black, or grey with light markings.



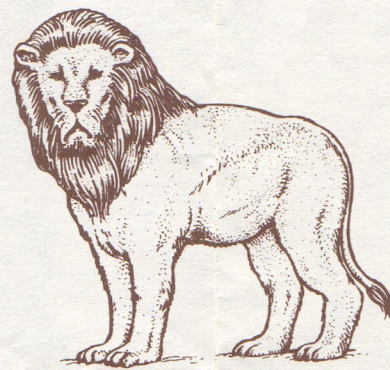
**Flamingo** — a large, beautiful water bird. Most flamingos have bright red feathers, although some have pink or white. The bird often rests by standing on only one leg.



**Fuller's earth** — a type of impure clay sometimes found in caves. Its color ranges from white to brown.



**Hornet** — a slender-bodied flying insect that often lives in a hanging nest. The nest can be huge and contain thousands of hornets.



**Lion** — a large, strong animal of the cat family. The male has a distinctive flowing mane. The lion generally lounges during the day and hunts at night.



**Ostrich** — the largest living bird, and one that does not fly. Its long legs and short wings enable the ostrich to run at great speeds.

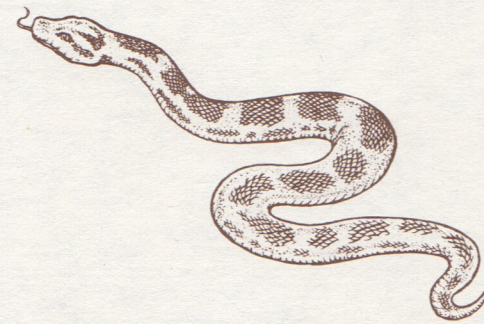


**Pineapple plant** — a single-stalked plant with sharp leaves. The fruit of the pineapple plant has a reddish or yellowish skin.



**Potato plant** — a low bushy plant whose underground root bears an edible vegetable.

For use with SWISS FAMILY ROBINSON™ computer program.  
©1984, Windham Classics  
One Kendall Square, Cambridge, MA 02139  
All rights reserved.



**Python** — a large, long snake with a grey body and black markings. It is active on the ground as well as in water.



**Quicksand** — smooth grains of sand which when wet form a soft, shifting mass.



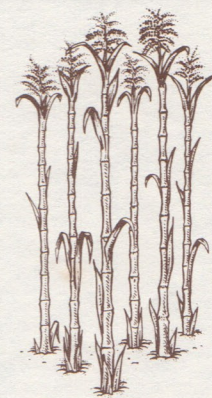
**Rice** — a type of grass plant with long flattened leaves that grows in swampy areas and produces seedlike grains.



**Rubber tree** — a tropical plant with large, glossy, leathery leaves. It grows best in hot, moist climates.



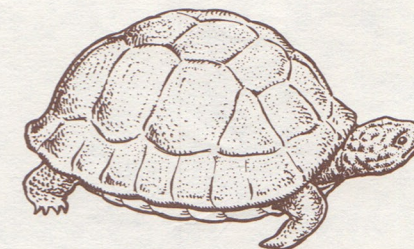
**Stalactites** — long, pointed rock formations found hanging from the ceilings of caves.



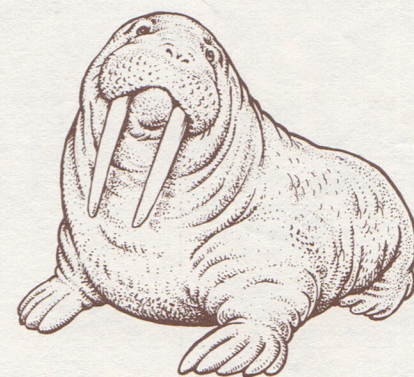
**Sugar cane** — a tall grass plant with jointed stalks and bladelike leaves. The masses of feathery flowers at the top distinguish sugar cane from bamboo.



**Tiger** — a large wild cat that has brownish-yellow fur with black stripes. The tiger's coloring serves as camouflage in the jungle.



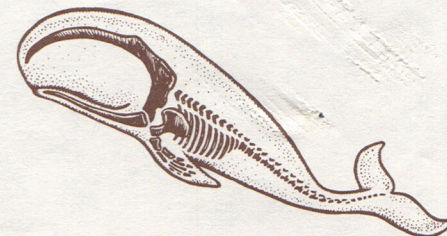
**Turtle** — a slow-moving reptile with a hard, boxlike shell covering its body. It lives longer than any other backboned animal.



**Walrus** — a large, flippered mammal with two long tusks protruding from its upper jaw. A walrus may weigh over a ton.



**Waxberry** — an evergreen shrub with small, glossy leaves that bears berries covered with a greenish-white wax.



**Whale** — a large mammal with flippers that lives in the sea. The jawbones of the whale are very large in proportion to the rest of its body skeleton.