

Thale's

Comprehensive
Guide to the

Beasts

&

Savages

of the

Plains



Blarg

THE BLARG (HEIGHT: 1.2 MEN, WEIGHT: 1.5 MEN) REPRESENTS THE LARGEST STRAIN OF MUTANT SAVAGE COMMONLY ENCOUNTERED ON THE PLAINS. TREMENDOUSLY POWERFUL, THE BLARG RELIES ON HIS GREAT HORNS FOR DEFENSE, THOUGH HE WILL, UPON OCCASION, USE MORE CIVILIZED WEAPONRY. A MALE IS DEPICTED—FEMALES OF THE STRAIN ARE USUALLY TURQUOISE IN HUE.

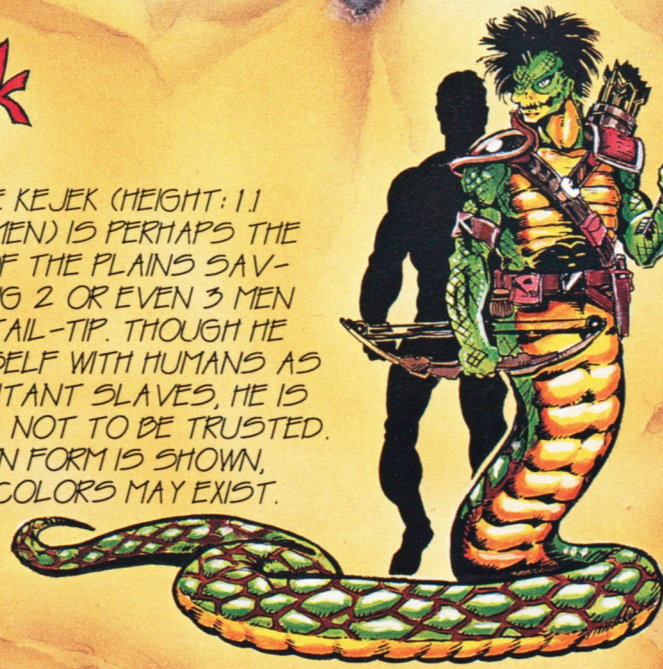
Mantic

THE MANTIC (HEIGHT: 1 MAN, WEIGHT: 1.25 MEN) IS NOT AS MASSIVE AS THE BLARG, BUT HE IS JUST AS DANGEROUS. THE QUILLS THAT COVER HIS ARMS, SHOULDERS AND BACK ARE NOT ONLY DEFENSIVE, BUT MAY BE LAUNCHED WITH LETHAL EFFECT OVER A CONSIDERABLE DISTANCE.



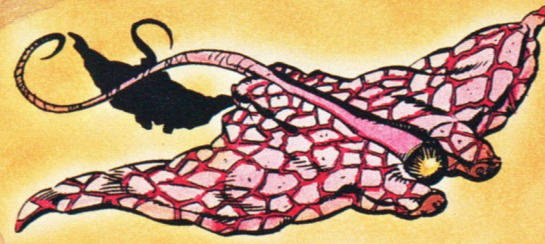
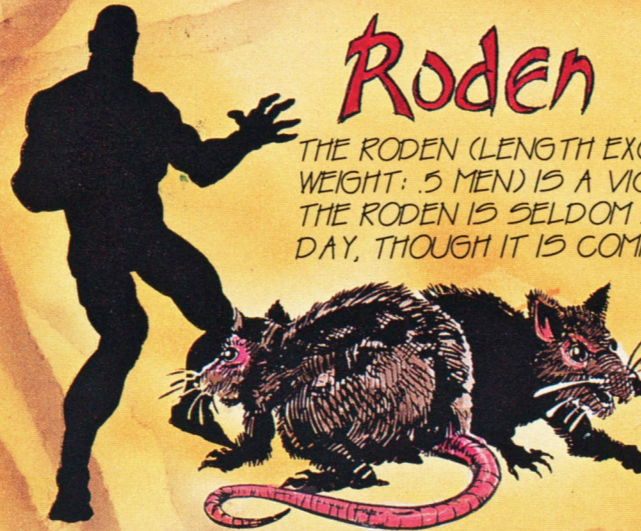
Kejek

THE HALF-SNAKE KEJEK (HEIGHT: 1.1 MEN, WEIGHT: 2 MEN) IS PERHAPS THE MOST BIZARRE OF THE PLAINS SAVAGES, MEASURING 2 OR EVEN 3 MEN FROM HEAD TO TAIL-TIP. THOUGH HE HAS ALLIED HIMSELF WITH HUMANS AS A HUNTER OF MUTANT SLAVES, HE IS WILY, QUICK, AND NOT TO BE TRUSTED. THE BEST-KNOWN FORM IS SHOWN, THOUGH OTHER COLORS MAY EXIST.



Roden

THE RODEN (LENGTH EXCLUDING TAIL: .6 MEN, WEIGHT: .5 MEN) IS A VICIOUS SCAVENGER. THE RODEN IS SELDOM SEEN DURING THE DAY, THOUGH IT IS COMMON AFTER DARK AMONG ANCIENT RUINS, AND IN ROUGH, BROKEN TERRAIN. IT'S ALSO SAID TO BE COMMON IN THE LEGENDARY CITY BELOW.



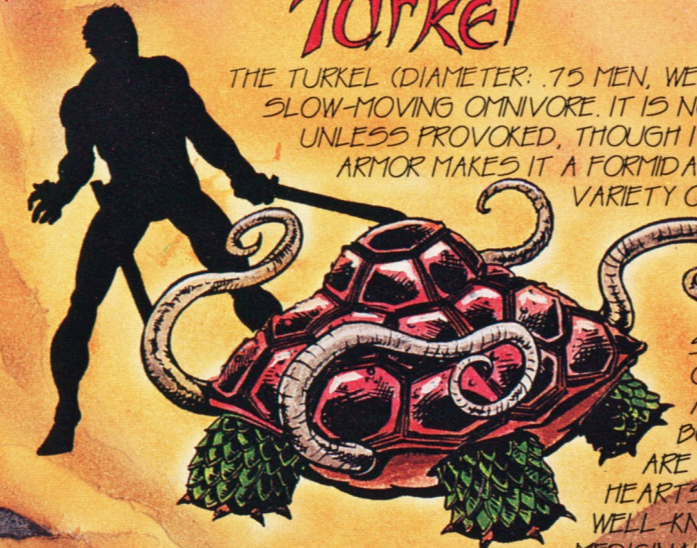
Buzzar

THE BUZZAR (WINGSPAN: 1.3 MEN, WEIGHT: .75 MEN) IS AN AIRBORNE PREDATOR COMMON ON SANDY FLATLANDS. IT NOISELESSLY STALKS ITS PREY, THEN SWOOPS IN FOR THE KILL, WHICH IT ACCOMPLISHES WITH A POWERFUL BIO-ELECTRIC SHOCK. DESPITE THE DANGER THE BEAST PRESENTS TO HUNTERS, THE BUZZAR IS HIGHLY SOUGHT AFTER FOR ITS LEATHERY HIDE, WHICH IS THE FINEST TO BE HAD ON THE PLAINS.



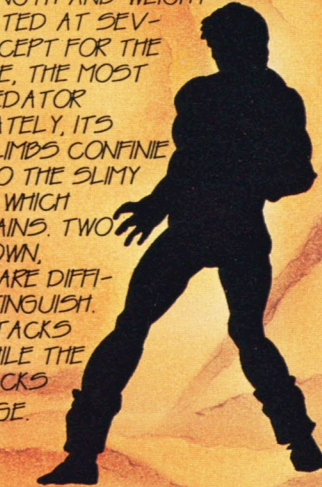
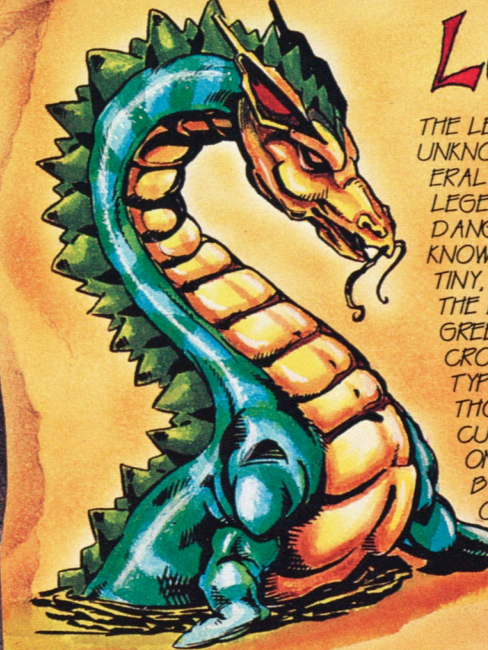
Turkel

THE TURKEL (DIAMETER: .75 MEN, WEIGHT: 3-4 MEN) IS A SLOW-MOVING OMNIVORE. IT IS NOT AGGRESSIVE UNLESS PROVOKED, THOUGH ITS IMPRESSIVE ARMOR MAKES IT A FORMIDABLE ENEMY. ONE VARIETY OF TURKEL DEFENDS ITSELF WITH WHIPPING TENTACLES, WHILE ANOTHER SHOOTS ITS CAUSTIC BLOOD AT ITS FOES. BOTH TYPES ARE HUNTED FOR THEIR HEARTS, WHICH HAVE WELL-KNOWN MEDICINAL PROPERTIES.



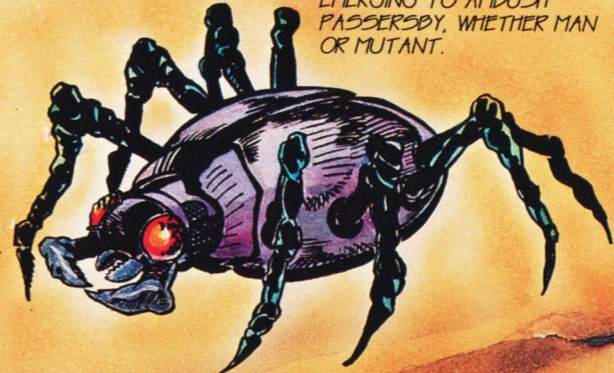
Legitter

THE LEGITTER (LENGTH AND WEIGHT UNKNOWN; ESTIMATED AT SEVERAL MEN) IS, EXCEPT FOR THE LEGENDARY URSE, THE MOST DANGEROUS PREDATOR KNOWN. FORTUNATELY, ITS TINY, USELESS LIMBS CONFINE THE LEGITTER TO THE SLIMY GREEN WATERS WHICH CROSS THE PLAINS. TWO TYPES ARE KNOWN, THOUGH THEY ARE DIFFICULT TO DISTINGUISH. ONE TYPE ATTACKS BY BITING, WHILE THE OTHER ATTACKS AT RANGE.



Bushbug

THE BUSHBUG (LENGTH 1 MAN, WEIGHT 1.75 MEN) IS AN AGGRESSIVE PLAINS PREDATOR. IT USUALLY HIDES JUST BENEATH THE SURFACE OF THE SAND, EMERGING TO AMBUSH PASSERSBY, WHETHER MAN OR MUTANT.



THE BUSHBUG'S HARD SHELL AND MINDLESS AGGRESSION MAKE IT A BEAST TO AVOID.



the Urse

THE URSE (HEIGHT: 2 MEN, WEIGHT: 8-12 MEN) MAY BE NOTHING MORE THAN A FIREFALE TOLD BY THE SAVAGES. ACCORDING TO TAINT LEGEND, THERE IS BUT ONE URSE, WHICH HIBERNATES FOR DECADES. WHEN IT AWAKENS, RAVENOUS AND ENRAGED, IT HUNTS THE PLAINS FOR MONTHS BEFORE DISAPPEARING INTO ITS LAIR FOR ANOTHER DECADES-LONG NAP. ITS CLAWS ARE SAID TO BE EIGHT INCHES LONG AND FORGED OF STEEL, THOUGH THE LATTER CLAIM IS DUBIOUS IN ANY CASE. AVOID AREAS THOUGHT TO BE NEAR THE URSE'S LAIR, JUST TO BE SAFE. OTHER BEASTS, LESS WELL-KNOWN, CERTAINLY EXIST ON THE PLAINS. TRAVELLERS WHO MIGHT ADD TO OUR KNOWLEDGE ARE ASKED TO SHARE THEIR EXPERIENCE WITH THALE THE TEACHER, FOR THE SAFETY OF ALL HUMANKIND.

GLEN JOHNSON & KEITH BERDAK